

2005 National HIV Seroprevalence Sentinel Survey



Process and Findings

**National AIDS/STDs Control Programme (NASCP)
Federal Ministry of Health, Abuja**

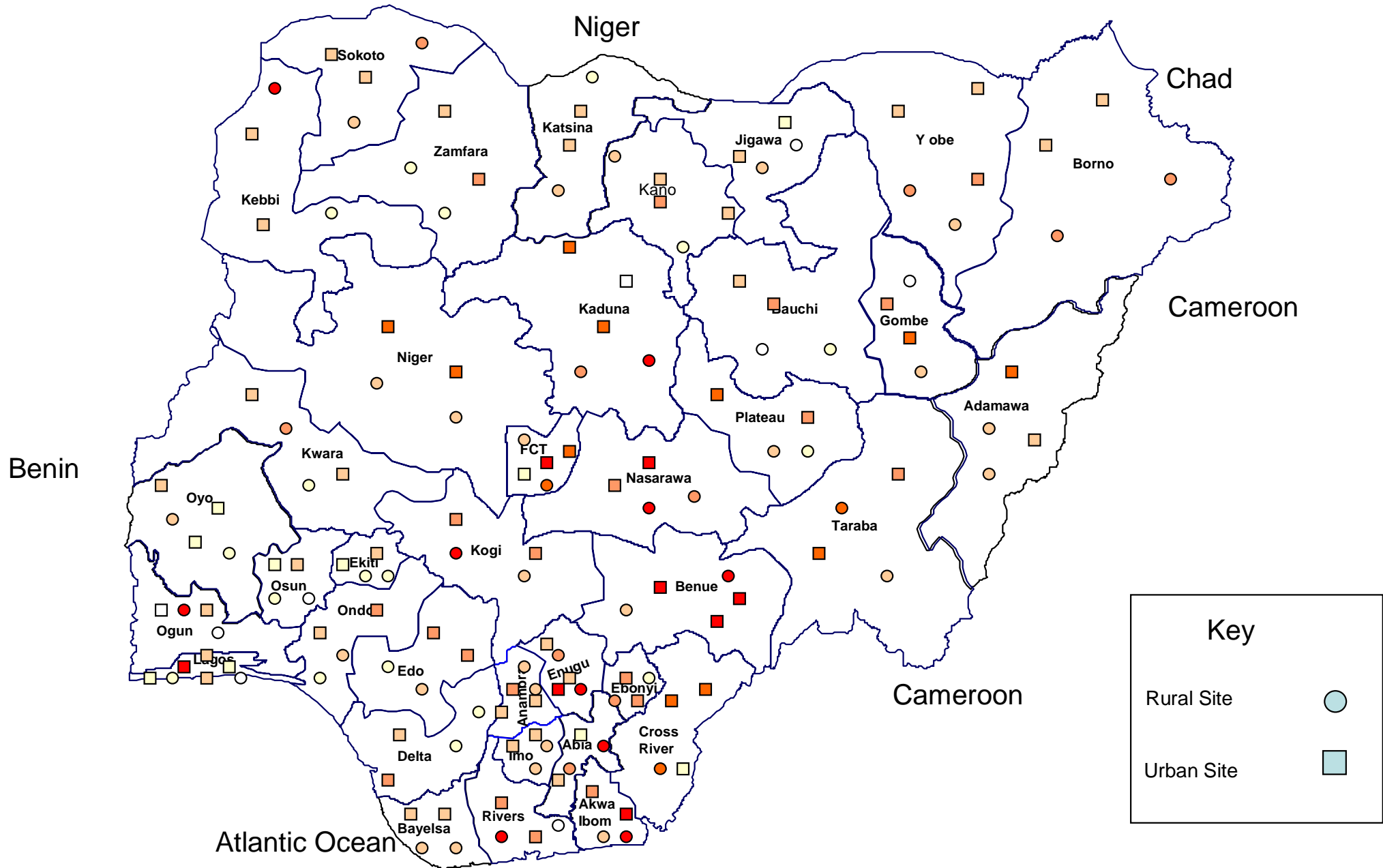
Objectives

- **To determine the prevalence of HIV and Syphilis infections among women attending ANC in Nigeria**
- **To determine the HIV prevalence by selected characteristics.**
- **To monitor trends of HIV prevalence among women attending antenatal clinics**
- **To make estimates and projections of the HIV/AIDS epidemic in the country**

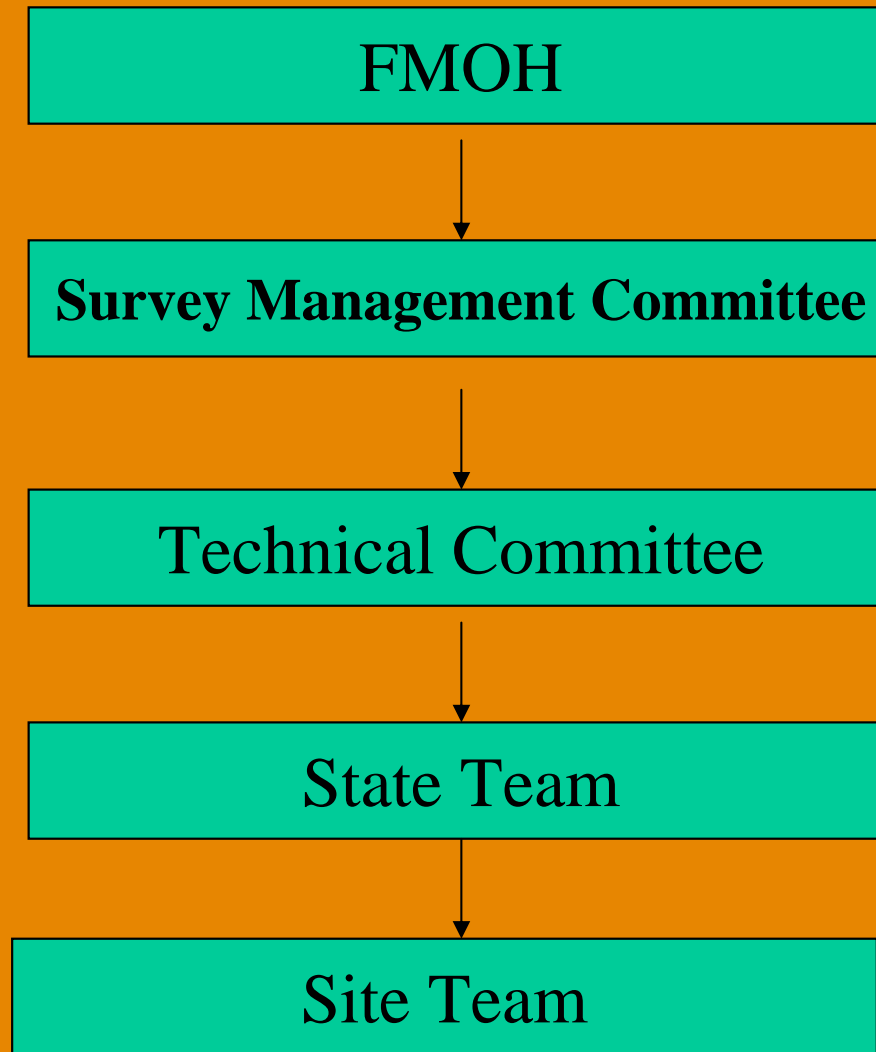
Methodology

- **Survey population included 36,931 women aged 15-49 years attending ANC**
- **Sentinel sites- Total of 160 sites(86 urban, 74 rural)**
- **An unlinked anonymous testing of samples were used**
- **Test results validated at Central Quality Control Laboratory**
- **Data analysis carried out using UNAIDS/WHO guidelines**

Geographic Distribution of Survey Sites



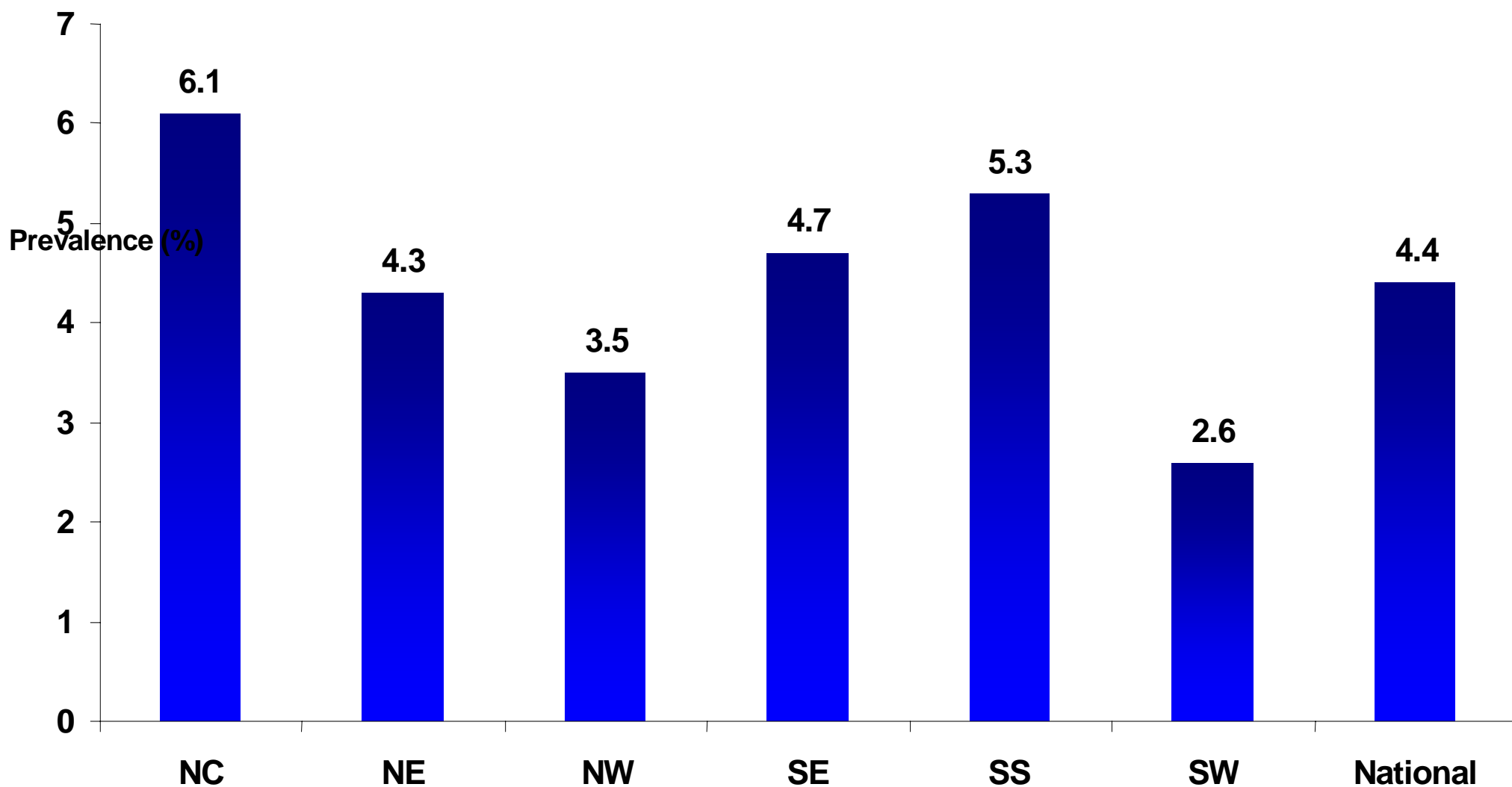
Management of Survey



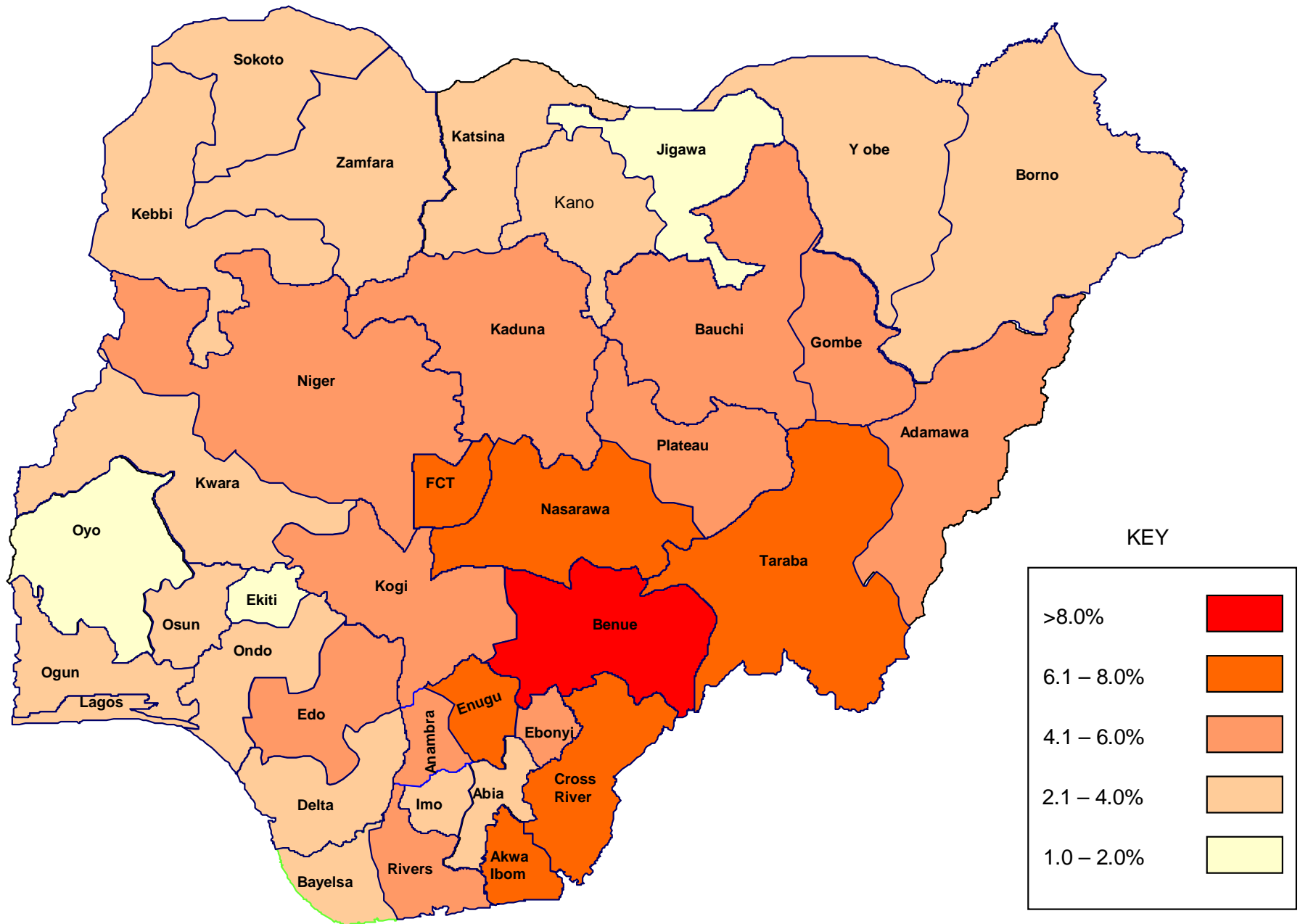
Survey Timetable – Key Activities

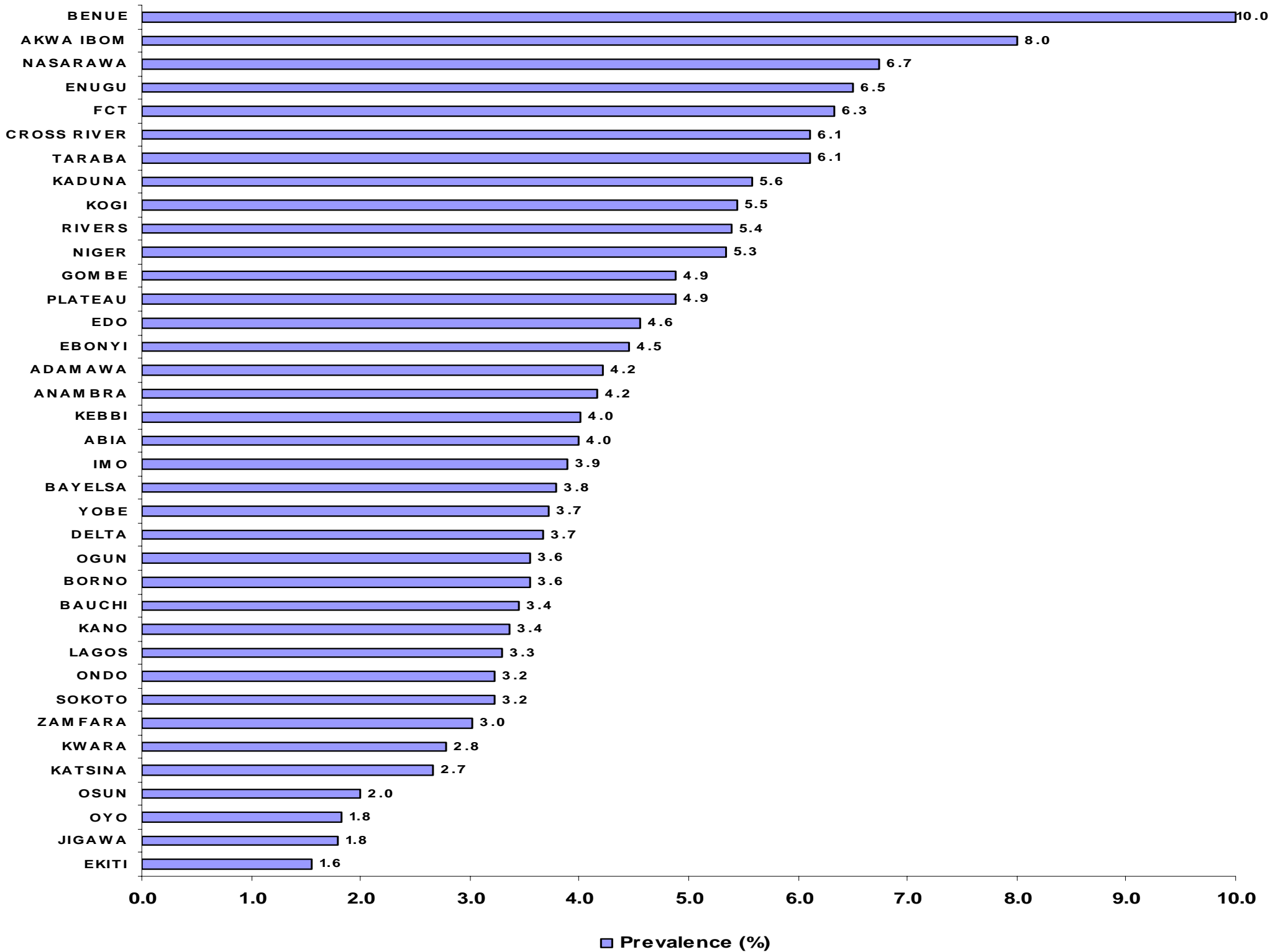
Description of Activity	Period
2003 Survey Lessons learnt and Protocol Development meeting	February 2005
Resource mobilization meeting	April 2005
Procurement and distribution of consumables and test kits to states	February – August 2005
Training: (Core training, Zonal training)	July – August 2005
Sample collection and testing	August – November 2005
QC and Testing:	February – March 2006
Data entry, Report writing	January – March 2006
Review of Technical report by	April 2006
Press briefing by HMH	April 2006
Printing of report	April 2006
Dissemination workshop	April 2006

HIV Prevalence by Zone (HSS 2005)

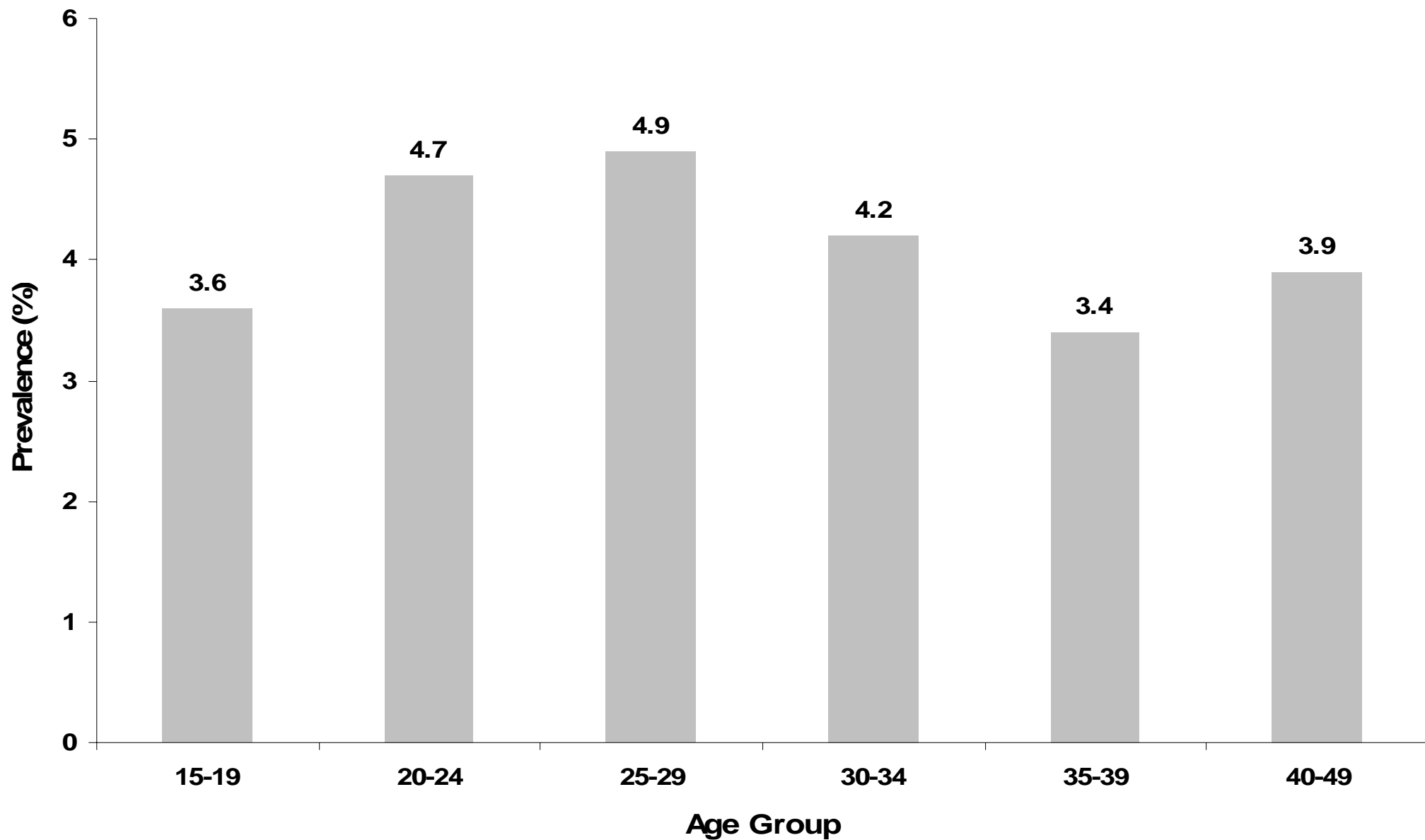


HIV Prevalence by state (Nigeria 2005)

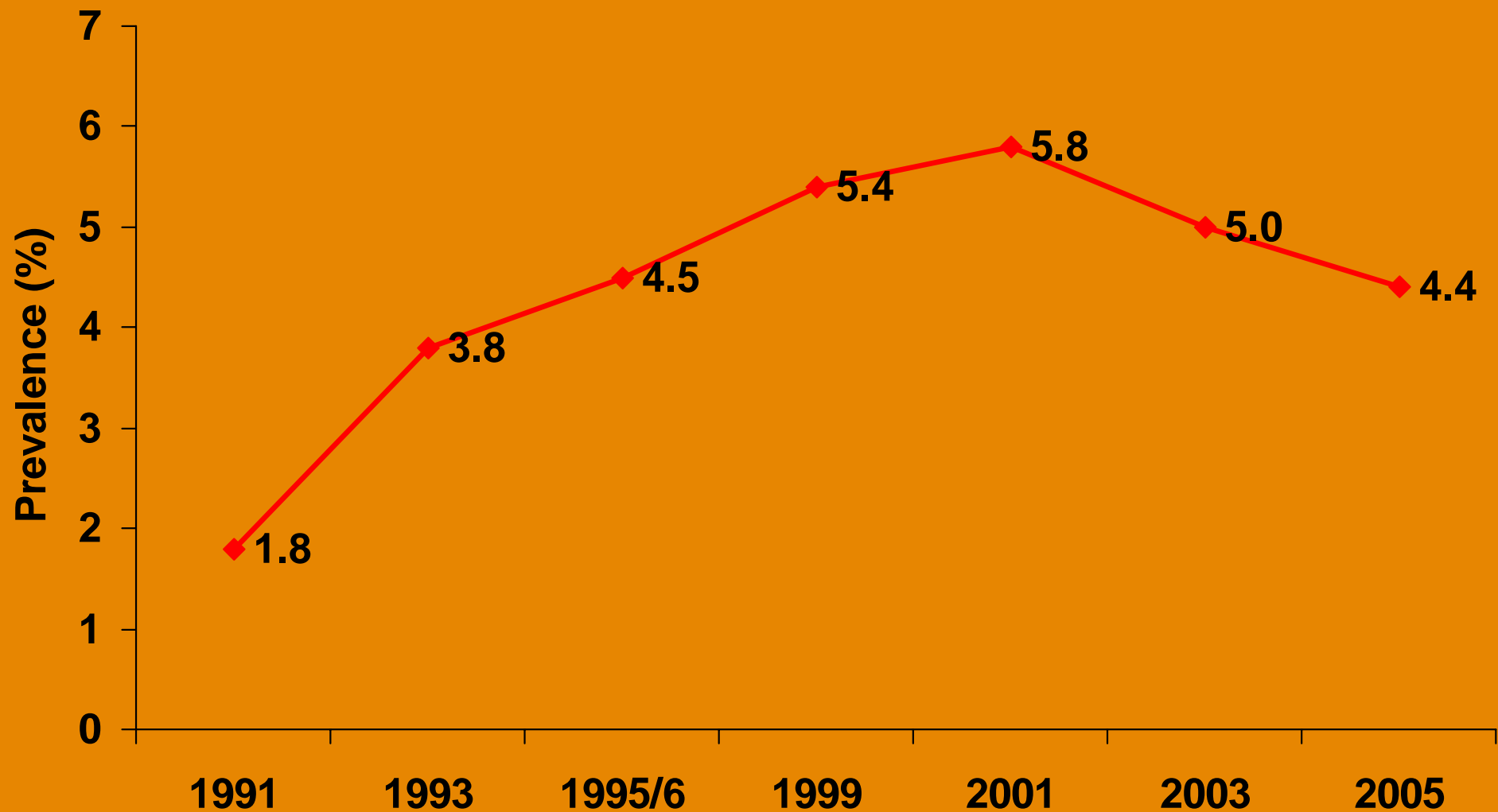




HIV Prevalence by Age Group (Years) HSS 2005



HIV Prevalence Trend (1991 – 2005)



HIV estimates for Nigeria

	2005	2006	2010
No of people infected	2.86 m	2.99m	3.4m
No of new HIV infections:			
▪ Adults	296,320	305,080	346,150
▪ Children (<15 yrs)	73,550	74,520	75,780
No requiring ART:			
▪ Adults	412,450	456,790	538,970
▪ Children (<15yrs)	94,990	98,040	106,840
Annual HIV +ve births	73,550	74,520	75,780
Cumulative deaths	1.45 m	1.70m	2.82m

Summary of findings

- Overall **HIV Prevalence** was 4.4% .
- Prevalence range: 1.6% in Ekiti to 10.0% in Benue state
- All states and FCT had prevalence of greater than 1%
- 15 states (FCT inclusive) had prevalence greater than the National average of 4.4%
- Overall **Syphilis prevalence** was 1.5%. Most states had prevalence of less than 1% except three states that recorded prevalence of greater than 2%.

RECOMMENDATIONS

- **With the rising epidemic levels in rural areas, there is need to increase rural area intervention efforts.**
- **The high prevalence among women with only 1^o and 2^o school education requires appropriate interventions focussing this group.**
- **A window of opportunity exists in parts of the country with relatively low prevalence; increased preventive interventions need be undertaken to curtail the epidemic.**
- **The HIV prevalence among ANC attendees calls for urgent expansion of PMTCT and HCT services for the general population**

RECOMMENDATIONS

- **The current care and support activities, especially the ART programme, need to be scaled up to meet the need of the large number of persons requiring ARV.**
- ***To better understand the dynamic of the epidemic in the country:***
- **Need to link the existing data from Biological and Behavioural surveys with Sentinel survey data.**
- **Conduct studies on HIV incidence to measure the level of new infections in the country.**
- **Undertaken a population-based survey to determine the HIV prevalence in the general population.**

Conclusions

- **Nigeria still has the 2nd highest burden of HIV Infection in Sub-Saharan Africa**
- **Out of the estimated 412,450 (Adults) PLWHA requiring ART, just over 50,000 have access to ART**
- **Need to intensify the ongoing scaling-up of ART programme**
- **Need to scale-up other intervention programmes including Preventive interventions like PMTCT and HCT**

Acknowledgment

The FMOH appreciates the supports of the following:

- NACA**
- Partners- CDC, DFID, WHO, UNAIDS, APIN, ENHANSE and Other Partners**
- SMC/TC members**
- State Teams**



Thank you